

Quick Start Guide

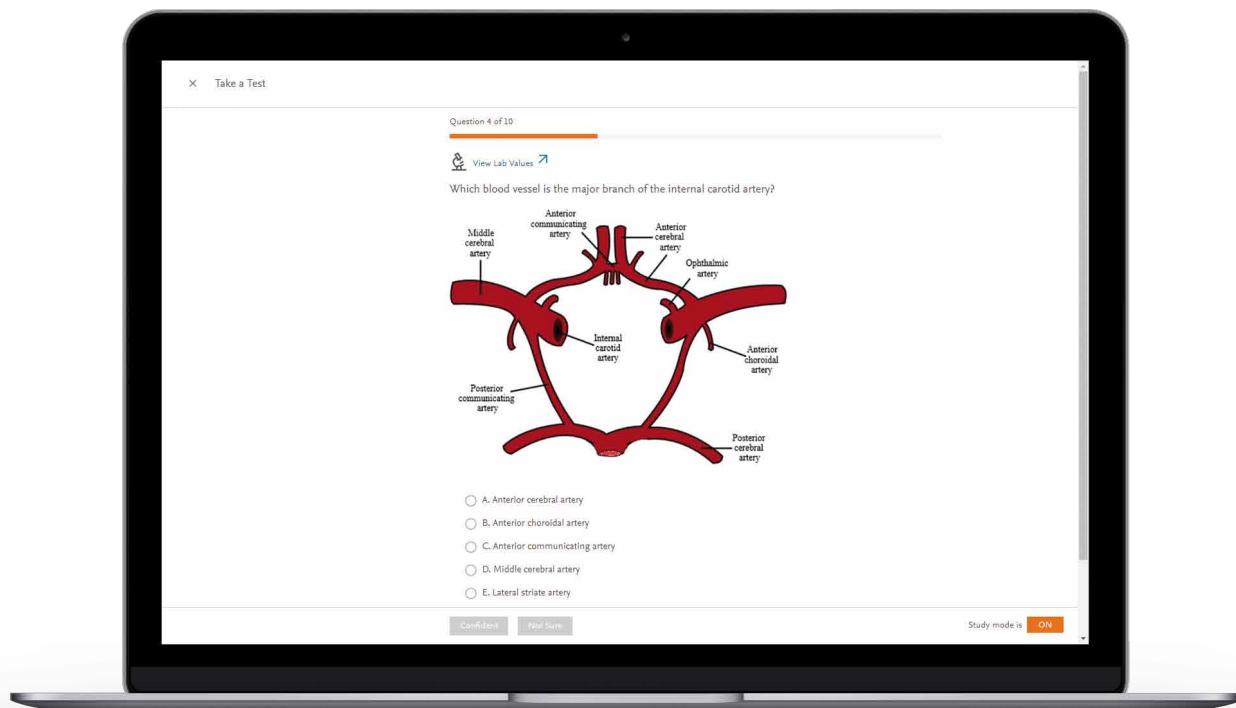
ClinicalKey Student is an interactive education platform that gives you access to hundreds of acclaimed textbooks and enhances learning through powerful study tools. Follow these simple steps to get started.

1 Create your account

- Go to your library page elibrary.taibahu.edu.sa/resolve
- Look for ClinicalKey Student www.clinicalkey.com/student , you will be requested to login
- If you have an account with another Elsevier product (e.g. ClinicalKey, ScienceDirect, Scopus), you can use these credentials to log in to ClinicalKey Student
- No Elsevier profile? Click 'Register' to create your personal account

2 Ready, test, go!

- Start creating a test by first selecting a topic area
- Filter by systems or disciplines and select one or multiple subjects
- Select the range of questions you want to test on
- Click 'Start my Test'



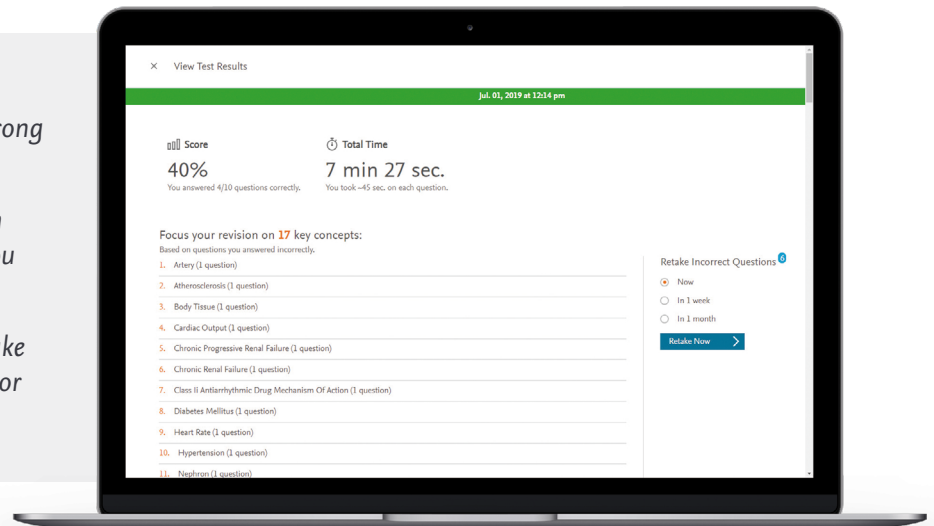
3 How did you do?

- View the key concepts that you should focus your revision on based on your incorrect answers

Tips: Study mode is on by default and explains why each answer is right or wrong as you work through the assessment

If you select the 'Not Sure' button when answering a question, this will allow you to retake that specific question later

After completing your test, you can retake the incorrect questions immediately or plan to retake them later



4 Build your own bookshelf

- Add a book to Bookshelf by clicking on "Launch Bookshelf" from inside a chapter of a book
- Make notes and highlight important information inside text
- Share your notes with other students
- Build your own flashcards to quiz yourself on key concepts and review later

Tip: Don't forget to download the ClinicalKey Student Bookshelf app to access Bookshelf on the go

